



---

## Welcome to our Green Synergy E-Newsletter

---

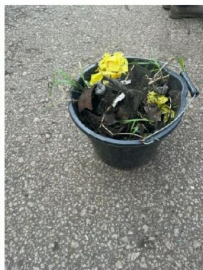
### Our News & Updates

March 2024 | Issue 15

---



Overgrown with weeds.



Some of the rubbish we removed.



Before



After



### Green Synergy Great British Clean and Tidy up.

A heartfelt thanks to all the volunteers who came out and helped us at our event last Saturday.

We made a good start on painting the fence which improves the entrance to the garden.

One of the beds was cleared of weeds ready for potatoe planting.

And a large amount of rubbish and litter was removed.

**Well done and  
Thank You to all  
involved.**

## Great British Clean - Up

Green Synergy joined in with the national Keep Britain Tidy initiative and arranged a clean-up on Saturday 16th March.

The sun shone on us and we had a really productive day, removing rubbish and weeds and repainting the entrance railings.

Our thanks go out to all the volunteers who joined us to help transform and improve the look of the area.

# 2024 Events

Here is an overview of the events we are running or attending over this year. Watch this space as more events are added.

We are always looking for volunteers to help out at the events we run on Hillside Garden, if you have some time to spare please let us know at [info@greensynergy.org.uk](mailto:info@greensynergy.org.uk)

## Events and Activities 2024



**14th April - Green Synergy will be at  
Countryside Lincs, Lincolnshire  
Showground 10am - 4pm**



**18th May - Annual Plant Sale  
Hillside Garden 10am**

**12th June - Pop Up Plant Sale Day  
at the office**

**13th July - Open day in aid of Green Synergy  
at Aubourn Hall and Gardens, 1pm - 4pm**

**7th August - Family Fun Day  
Hillside Garden, 12 noon - 4pm.**



**23rd October - Global Harvest Celebration  
Hillside Garden 12 noon - 3pm**

**28th November - Wreath Making Workshop,  
5.30 pm. Booking on Eventbrite**



**11th December - Carols on the Garden 1.30pm - 3pm  
with Monks Abbey School Choir and Nettleham  
Community Choir**

Info@greensynergy.org.uk Phone 01522533077  
Registered Charity 1153883 Company No 08399741

---

## easyfundraising for Green Synergy

**Raise money for Green Synergy without spending an extra penny!**

We are thrilled to be a part of easyfundraising, a fantastic, free-to-use platform that turns your everyday online shopping into free donations for our cause.

Every purchase you make through easyfundraising can make a difference. Whether it's a one-off purchase or your weekly grocery shop, each contribution counts.

Join our mission and help us raise funds effortlessly. Your support means the world to us.

[Sign up here](#)

easyfundraising  
turns your online  
shopping into  
everyday magic

[Support us](#)



easyfundraising You shop, brands donate to us

**GREEN SYNERGY**  
**WARM PACKS**  
 Whilst Stocks Last

**Typical contents include**

- Hat and Socks (in adults or kids size)
- Radiator key, Throw blanket
- Hot water bottle, Reusable hand warmers
- Torch, Insulated Cup

And a voucher for membership at Community Grocery  
 (one per house hold)

To arrange collection please contact  
[info@greensynergy.org.uk](mailto:info@greensynergy.org.uk)  
 or call 01522533077

**GREEN SYNERGY**  
 growing the community together

Funded by UK Government | Delivered by THE NATIONAL LOTTERY COMMUNITY FUND

Register Charity Number:  
 1153883

## We are recruiting new Trustees to our Board

Green Synergy is a successful charity that supports people in the most disadvantaged communities in Lincolnshire to improve their mental and physical wellbeing. Our work includes:

- Community gardening and therapeutic horticultural programmes.
- Community engagement events that bring people together to create more life chances, quality green spaces and to re-connect people to green spaces, growing and nature.

We are looking for new trustees, including a Treasurer, who are passionate about improving lives and communities through gardening and horticulture. Green Synergy has ambitious growth plans and we wish to strengthen our board's expertise in the following areas:

- Charity Finance including budgeting and year-end accounts (Treasurer)
- Marketing and Communications including social media
- Social Enterprise
- Knowledge of local policy especially regarding health, social care, education, employment and the environment

As a trustee you will:

- Have an induction, training and reimbursable expenses
- Contribute to improving lives and communities that are disadvantaged
- Have opportunities to develop new skills and to network with professionals

A wide range of applications are welcomed especially those with lived experience. The expected time commitment is a bimonthly board meeting and other

events. As well as preparing for the board meetings Trustees may be called upon for specific advice and support in their areas of expertise.

For more information, download the [Trustee Recruitment Information 2024](#)

To arrange an informal conversation please email us at [info@greensynergy.org.uk](mailto:info@greensynergy.org.uk)

## Warm Spaces

Green Synergy have now extended our warm spaces offer to include:  
Coffee mornings on Mon 10:30 to 12:00 and Wed 10:00 to 12:00  
Knit and Natter on Thurs 13:00 to 15:00,

Everyone is welcome to come.



## Volunteering Opportunities

If you enjoy volunteering and helping out, why keep it to yourself?

Share the love and come and join our charity.

Green Synergy has a number of opportunities  
with the following volunteer roles:

Trustees,

Garden Volunteers,

Children and Young People Project Volunteers,

Corporate Volunteers.

For more information please message us at [info@greensynergy.org.uk](mailto:info@greensynergy.org.uk)

Green Synergy | 49 Roman Pavement,, Lincoln, Lincolnshire,  
Lincoln, LN2 5RD United Kingdom <https://greensynergy.org.uk/>

[Unsubscribe info@greensynergy.org.uk](mailto:info@greensynergy.org.uk)

[Update Profile](#) | [Our Privacy Policy](#) | [Constant Contact Data  
Notice](#)

Sent by [info@greensynergy.org.uk](mailto:info@greensynergy.org.uk) powered by



Try email marketing for free today!